

LK 810 ECO Loading Unit

Compact loading unit with low energy pump for all types of solid fuel boiler/storage tank installations.

TECHNICAL DATA

Voltage	230 VAC 50 Hz
Power consumption	Min. 5 W, Max. 45 W
Max. boiler capacity	75 kW with 30°C ΔT
Max. operating temperature	110°C
Max. operating pressure	1,0 MPa (10 bar)
Max. flow	2300 l/h
Return temperatures	55°C, 60°C, 65°C or 70°C
Loading pump	Grundfos Alpha 2L 60
Sizes	Rp 1", Rp 1¼" or 28 mm compression fittings. NPT threads available.
Material	Body of brass EN 1982 CB752S
Dimensions WxDxH	240 x 130 x 270 mm
Weight	4.8 kg
Delivered with EPP-insulation.	

DESIGN

The LK 810 ECO loading unit ensures a minimum return-water temperature into the solid fuel boiler, which increases boiler efficiency, prevents tarring and considerably prolongs the lifetime of the boiler. LK 810 ECO eliminates the risk of destructive thermal shock caused by surges of cold water and renders a more effective burning. The boiler quickly reaches the right working temperature. In the end phase of the firing an automatic balancing valve closes the by-pass loop. This results in a maximum supply from boiler to storage tank. LK 810 ECO is for boilers with a capacity up to 75 kW.

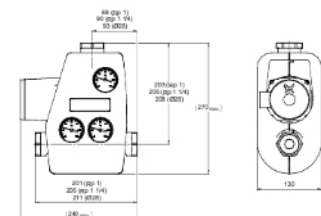
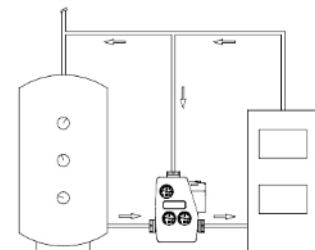
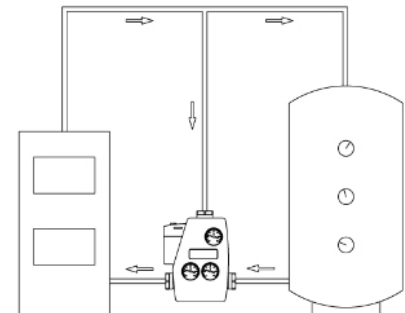
LK 810 ECO loading unit comes in two versions, with or without backflow preventer. With a backflow preventer the LK 810 ECO automatically allows self-circulation of the remaining hot water to the storage tank, as soon as the fire has gone out or in case of power failure. Back flow from storage tank to heating boiler is prevented.

MOUNTING/INSTALLATION

LK 810 ECO is mounted upright on the return pipe. The loading unit is reversible and can be installed on the right- or left-hand side of the heating boiler.



Installation examples



OPERATION AND MAINTENANCE

LK 810 ECO normally requires no maintenance. The loading unit has three ball valves. Any part can be changed without draining the system.

Article Type	Art. no.	Dim.
LK 810 ECO with backflow preventer	181048	Rp 1"
LK 810 ECO with backflow preventer	181050	Rp 1¼"
LK 810 ECO with backflow preventer	181052	28 mm
LK 810 ECO with backflow preventer	181054	Rp 1"
LK 810 ECO with backflow preventer	181056	Rp 1¼"
LK 810 ECO with backflow preventer	181058	28 mm
LK 810 ECO with backflow preventer	181060	Rp 1"
LK 810 ECO with backflow preventer	181062	Rp 1¼"
LK 810 ECO with backflow preventer	181064	28 mm
LK 810 ECO with backflow preventer	181066	Rp 1"
LK 810 ECO with backflow preventer	181068	Rp 1¼"
LK 810 ECO with backflow preventer	181070	28 mm
LK 810 ECO without backflow preventer	181049	Rp 1"
LK 810 ECO without backflow preventer	181051	Rp 1¼"
LK 810 ECO without backflow preventer	181053	28 mm
LK 810 ECO without backflow preventer	181055	Rp 1"
LK 810 ECO without backflow preventer	181057	Rp 1¼"
LK 810 ECO without backflow preventer	181059	28 mm
LK 810 ECO without backflow preventer	181061	Rp 1"
LK 810 ECO without backflow preventer	181063	Rp 1¼"
LK 810 ECO without backflow preventer	181065	28 mm
LK 810 ECO without backflow preventer	181067	Rp 1"
LK 810 ECO without backflow preventer	181069	Rp 1¼"
LK 810 ECO without backflow preventer	181071	28 mm