

DETAIL Rev D(b)
SCALE 1.500

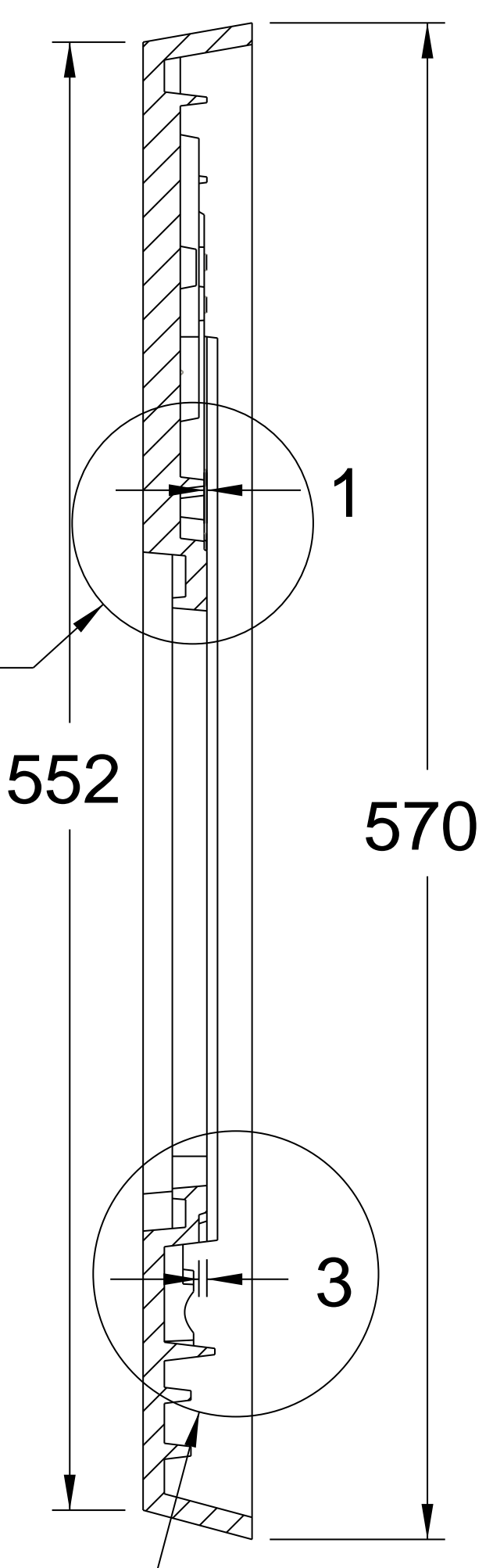
2 Holes drill Ø 5.4mm
Tap 1/4" BSW thru'

3 Holes DRILL Ø 5.4mm
Tap 1/4" BSW thru'

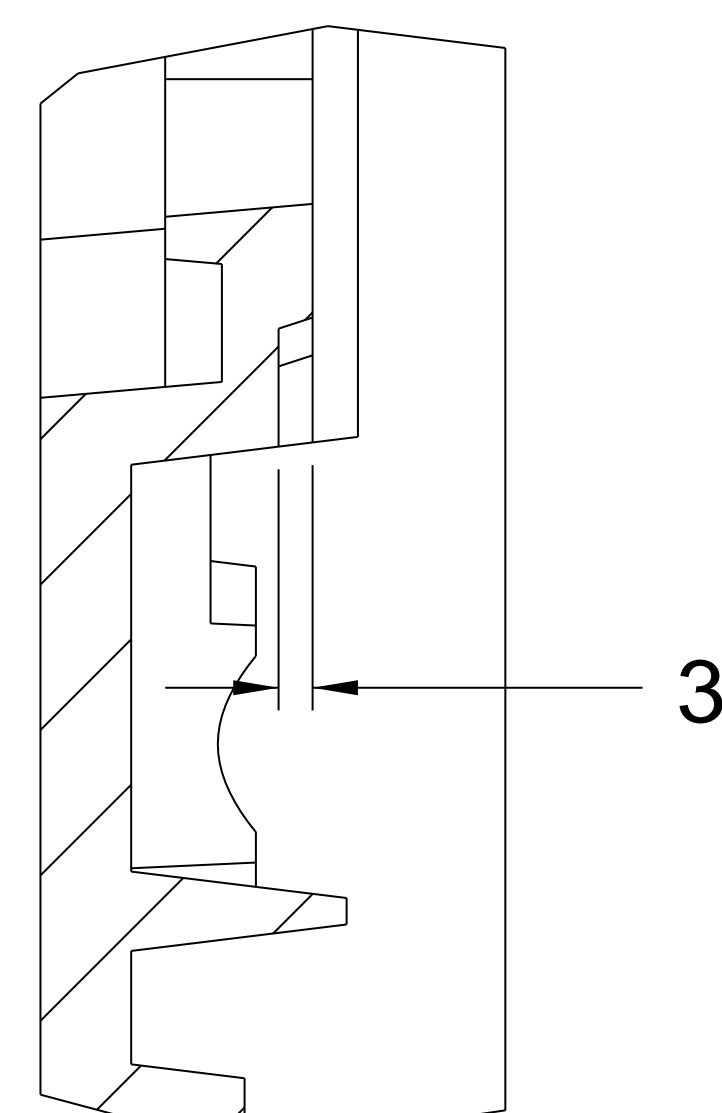
SEE DETAIL
Rev D(b)

SEE DETAIL
Rev D(a)

SECTION A-A



Height of bosses and rib reduced by 1mm
(Rev D)
Please ensure that the dimple position is
not altered before material is removed.



DETAIL Rev D(a)
SCALE 1.500

THIS DRAWING IS THE PROPERTY OF WATERFORD STANLEY LTD. BILBERRY WATERFORD IRELAND. IT SHALL NOT, UNLESS UPON PRIOR WRITTEN PERMISSION OF WATERFORD STANLEY LTD., BE USED FOR ANY PURPOSE EXCEPT THE MANUFACTURE OF ARTICLES FOR WATERFORD STANLEY LTD.

Part No: B00136DXX

Weight: 28.266

HOB	
Material: CAST_IRON	
Drawn: M Patterson	Date: 21/09/99
Chkd:	Date: REV: D
Aprvd:	Date: Scale: 0.450
Dimensions in mm	
Size: A0	

NOTES:- CASTING TO BE ENAMELED OVER GROUND COAT FOR ALL MARKETS EXCEPT AUSTRALIA / NEW ZEALAND.

WATERFORD STANLEY LTD.

REV	MODIFICATION	DATE	INITIALS
D	Material removed from areas detailed	22/03/07	MP
C	2 Lugs removed from inside where detailed.	13/12/05	DMc