



hunterstoves
GROUP



ASPECT RANGE

Multifuel Grate Kit

Instructions for installation and use

REMOVING THE WOODBURNING KIT

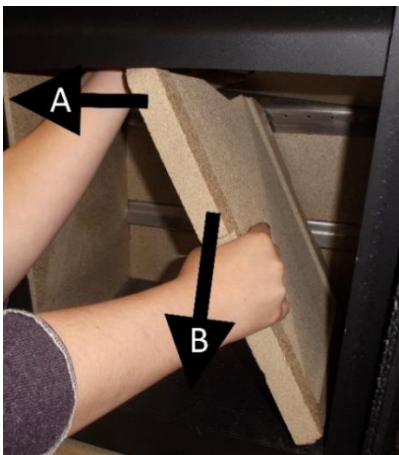
1. Remove the current log retainer.



2. Remove the bottom base brick by lifting up on one side (A) and slide out of body of stove (B).

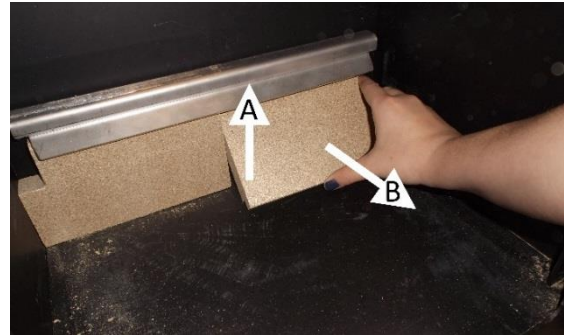


3. Remove the both the side bricks, taking care not to disturb the top rear bricks. Pull top inwards (A) and then remove the brick from the stove (B).



4. Remove the brick or steel baffle.

5. Remove both the bottom rear bricks by pushing the brick upwards (A). Then pull the bottom edge of the rear brick forward and lift the brick out of stove. Repeat with other brick.



FITTING THE MULTIFUEL KIT

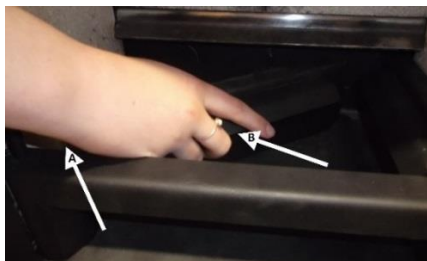
- 1) Refit both side bricks.
- 2) Fit the front grate support by dropping in place.



- 3) Side plate front (A).



- 4) Offer the side plate into the stove (B), with (A) fitting into the front grate support and slide into place.



- 5) Lower the back edge of the grate onto the side and front supports and slide backwards. When fitted the grate will lie flat.



- 6) Slide the ash pan in under the front support.



- 7) Place the new log retainer (A) onto the pins (B).



Solid Mineral Fuel Burning

Lighting the Stove

First, load the fire with starting fuel, i.e. paper, dry sticks and/or firelighters in the mode chosen, either wood or solid mineral fuel.

Light the fire at the base leaving all air controls open. Allow the fuel to reach a steady glow and build the fire up gradually.

Once you have a good fire established across the grate bed, further fuel can be added as required.

Recommended Solid Mineral Fuels

Use only good quality anthracite or manufactured briquette smokeless fuels listed as suitable for use with closed door appliances.

Only authorised fuels may be used in UK smoke control areas.

A list of authorised fuels can be found at <http://uksmokecontrolareas.co.uk/fuels.php>

A list of HETAS approved fuels can be found at http://hetas.co.uk/public/hetas_guide.html

Warning!- Do not burn Bituminous coal, 'Petro-Coke' or other petroleum based fuels or treated wood such as pallets as this will invalidate the product warranty. Household waste must not be burned on this appliance.

Should any difficulties arise over fuel quality or suitability, consult your local approved fuel merchant or:

HETAS Ltd.– Telephone 01242 673257 – www.hetas.co.uk

Solid Fuel Association – Telephone 0800 600 000 www.solidfuel.co.uk

Loading the Stove (Solid Mineral Fuel)

Solid mineral fuel should be placed in the stove so that there is no more than a 30° incline of the fuel bed from front to back.

It should **not** be stacked above the level of the tertiary air bar as this may result in damage to the stove.

With a full load of fuel, the stove will need to be refuelled approximately once every 2 hours.

Air Controls (Solid Mineral Fuel)

The optimum performance for burning solid fuel will be dependent upon the fuel properties and the flue draught. You will need to vary the air control to find your ideal burn rate.

Always de-ash before refuelling and do not let the ash level reach the underside of the grate. Solid mineral fuel produces ash, which if allowed to build-up will stifle the airflow through the air inlets and grate. This will eventually cause the fire to die.

With some solid mineral fuels a residue of burnt fuel or clinker will accumulate on the grate, allow the fire to go out periodically to remove this.

Important! - We cannot stress firmly enough how important it is to empty the ashpan regularly. Air passing through the firebed cools the grate. Distortion or burning out the grate is nearly always caused by ash being allowed to build up to the underside of the grate.

Extended Burning (Solid Mineral Fuel)

The stove can be banked up for extended burning.

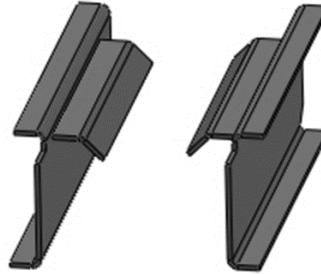
When burning solid fuel, empty the ashpan, open the air control and let the fire burn brightly for a short period.

Refuel and close the air control, the exact setting required will depend on the fuel used and the chimney draw so some practice may be necessary.

To revive the fire, open the air control until the fire is burning brightly de-ash if necessary and refuel. Set air control as required.

Spares

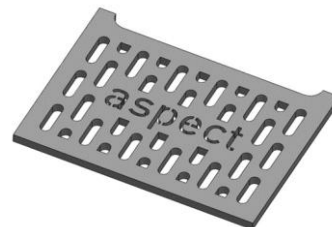
Grate Side Supports



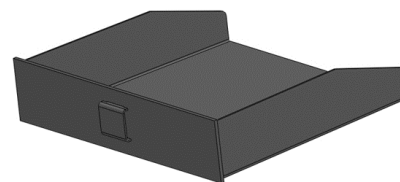
Grate Front



Multifuel Grate



Ash pan



Log Retainer



Codes for Multifuel Kits

Stove	Kit Code	Front	Grate Side Supports	Multifuel Grate	Ash Pan	Log Retainer
4 Compact	JPA04C	ECIC04075	ECIC04076 & ECIC04077	ECIC04078	ECIC04074	ECIC04079
4	JPA04		ECIR05076 & ECIR05077	ECIR04078	ECIR04074	
5 Compact	JPA05C	ECIC075	ECIC04076 & ECIC04077	ECIC05078	ECIC05074	ECIC05079
5	JPA05		ECIR05076 & ECIR05077	ECIR05078	ECIR05074	
5 Slimline	JPA05S	ECIS05075	ECIS05076 &	ECIS05078	ECIS05074	ECIS08079
8 Slimline	JPA08S	ECIS08075	ECIS05077	ECIS08078	ECIS08074	

