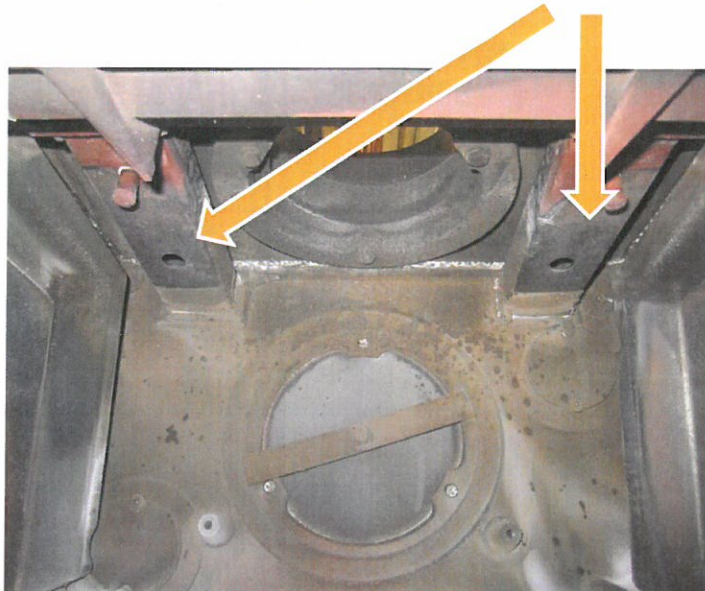


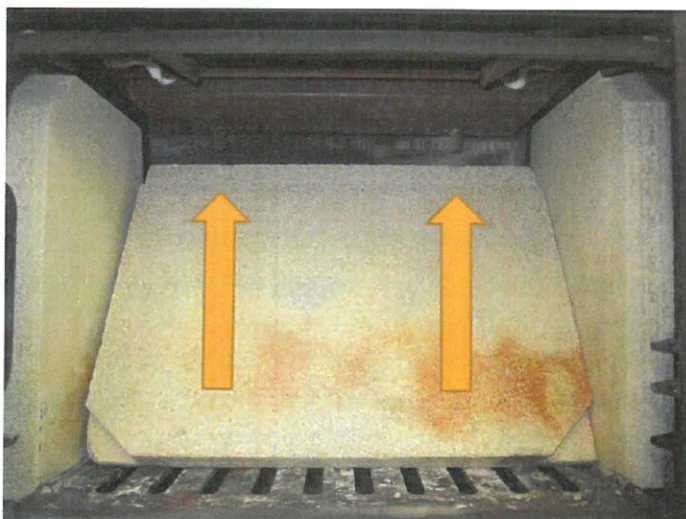
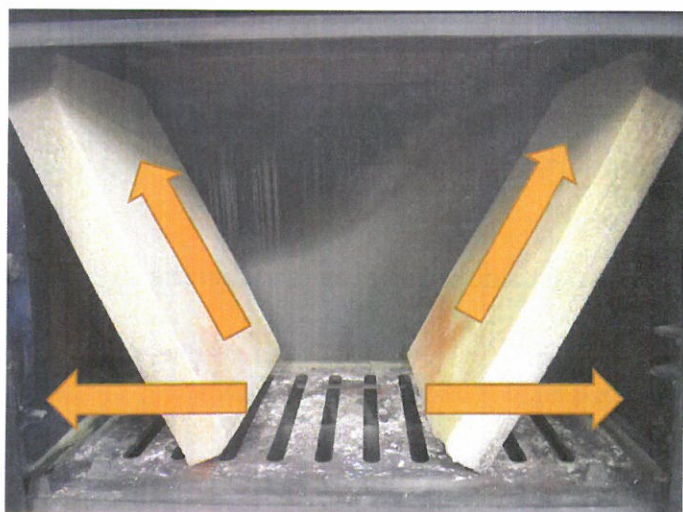
Baffle and Gasket Fitting

The baffle (FB910001) is supplied with two gaskets (FB142908) to seal between the baffle and the two air ducts in the top of the stove.

It is best to stick the gaskets to the top of the baffle plate, as shown below with the holes in the gasket corresponding to the holes in the top of the baffle, so that when the baffle is pushed up they do not move and obstruct the air holes in the air ducts to the tertiary air box.



The two side firebricks can then be slid into position and then the rear firebrick can then be slotted up behind the two pegs which hold the tertiary air box to the baffle. The diagonal cut outs are at the bottom of the rear firebrick are to enable easier removal of the brick.



Firebox Components - Montfort Elegance

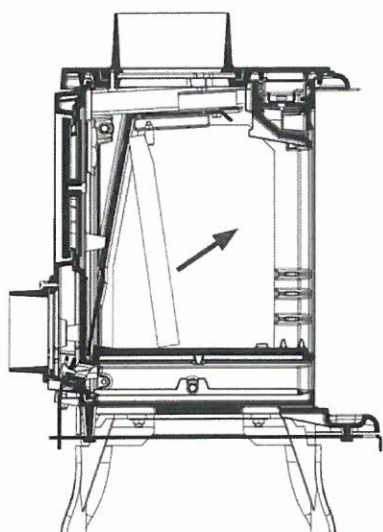


Figure 6a

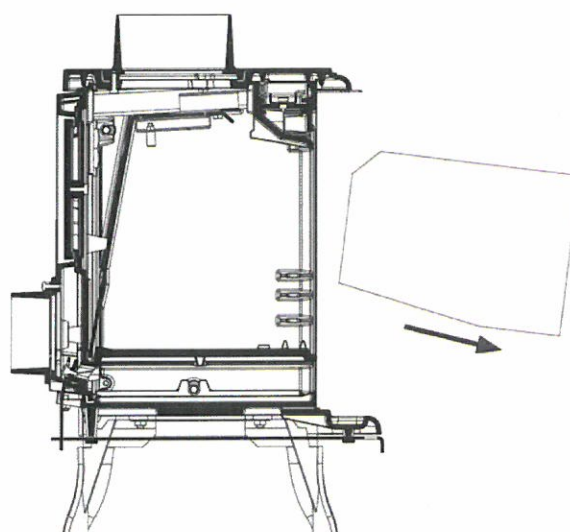


Figure 6b

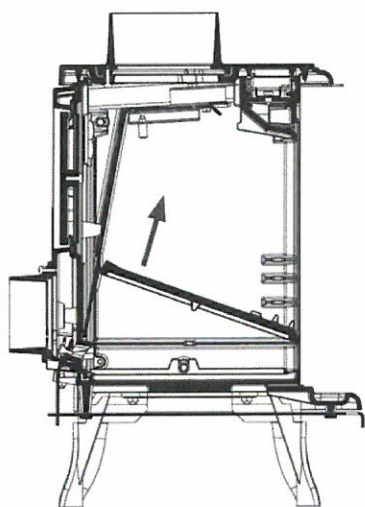


Figure 6c

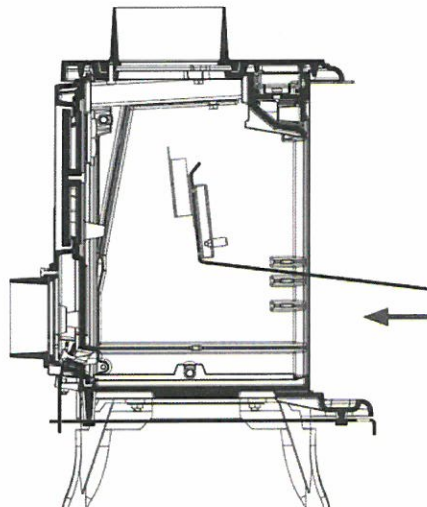


Figure 6d

Dismantling the Firebox Components

- 1) Remove the log guard. Lift the left side upwards and slide the right side out of the casting on the right. It can then be withdrawn from the stove.
- 2) See figure 6a. Take hold of the bottom of the rear firebrick, there are cut outs to allow your fingers to grip the brick, slide it towards the front of the stove. It can then be angled to withdraw from the stove.
- 3) See figure 6b. Remove both side firebricks.
- 4) See figure 6c. Lift the rear of the grate upwards into a vertical position. It can then be angled to withdraw from the stove. A screw driver may be required to help lift the rear.
- 5) See figure 6d. Push the top of the baffle upwards whilst pulling out the bottom towards the front of the stove. A screw driver may be needed to do this.
- 6) We recommend that the inside of the stove should be vacuumed clear of ash when this procedure is done and also at the end of the heating season.
- 7) Ensure when refitting the baffle that new gaskets FB142908 are used to ensure that the air does not leak in above the baffle where combustion could occur damaging the baffle, see page 14.