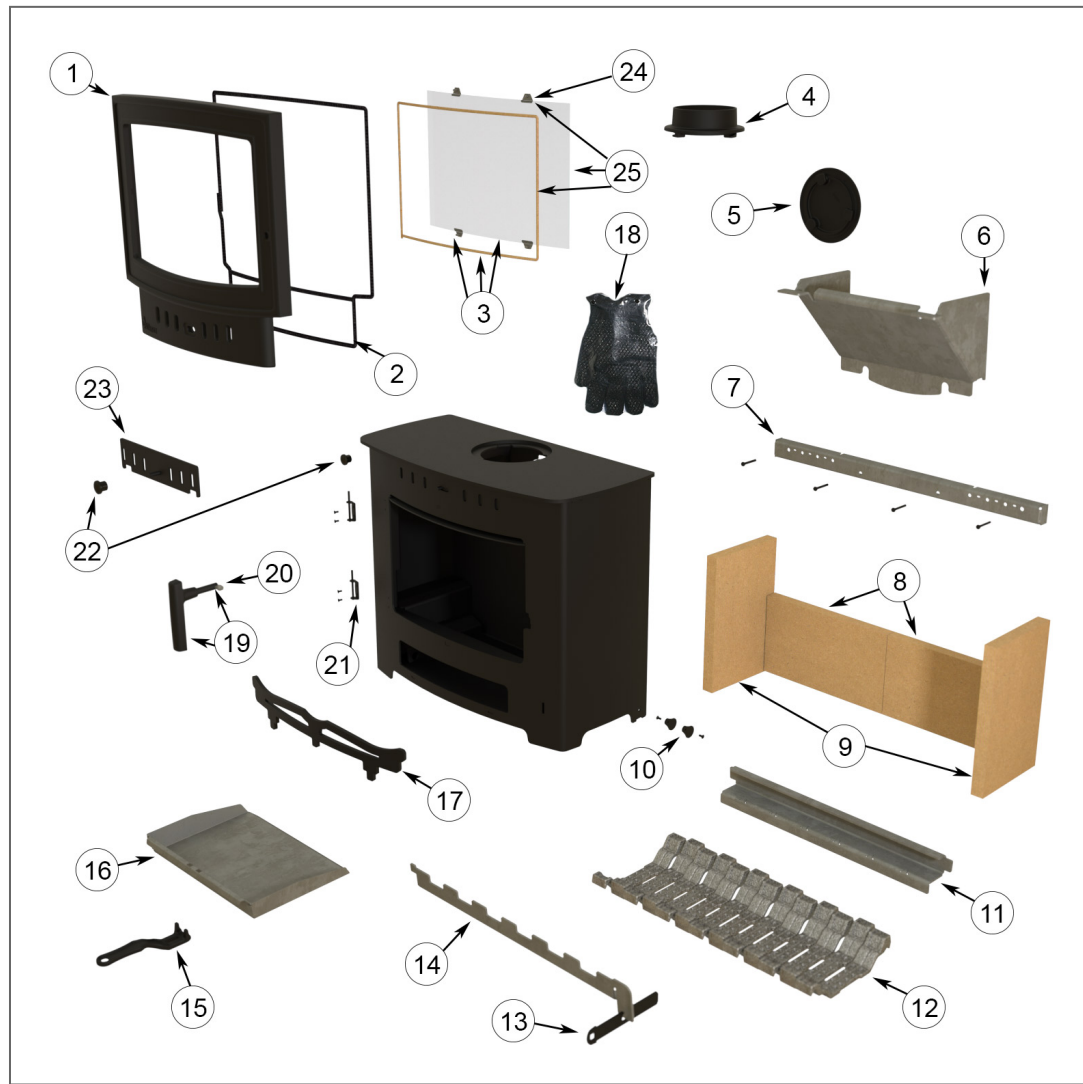


VILLAGER ESPRIT 10 FLEXIFUEL SOLO - SERIES 2 (ESPRIT10FSOLO-S2) Parts list

- 1) 1 x FIRE DOOR (AFS2200)
- 2) 1 x ARADA ROPE KIT 3 (ARA019)
- 3) 1 x GLASS KIT (AFS1423)
- 4) 1 x 5 INCH FLUE SPIGOT (AFS009)
- 5) 1 x 5 INCH HOT PLATE (AFS010)
- 6) 1 x THROAT PLATE (AFS1527)
- 7) 1 x TERTIARY AIR BAR & FIXINGS (AFS1465)
- 8) 2 x LINER 290 X 165 X 25
- 9) 2 x LINER (REAR OR SIDE) (AFS1069)
- 10) 2 x SELF LEVELLING FEET (AFS2705)
- 11) 1 x GRATE BAR SUPPORT (AFS1464)
- 12) 13 x FLEXI GRATE BAR - SMALL (AFS2375)
- 13) 1 x FLAT RIDDLE BAR (VFS191)
- 14) 1 x COMB FOR ESPRIT10 FLAT RIDDLE BAR (VFS197)
- 15) 1 x OPERATING TOOL (AFS008)
- 16) 1 x ASH PAN (AFS1422)
- 17) 1 x FUEL RETAINER (CURVED) (AFS1614)
- 18) 1 x ARADA HOT GLOVE (ARA010)
- 19) 1 x FIRE DOOR HANDLE ASSEMBLY (AFS2360)
- 20) 1 x ROLL PIN (PACK OF TWO) (AFS2850)
- 21) 2 x HINGE (LEFT HAND) (AFS2795)
- 22) 2 x AIRWASH KNOB (AFS1405)
- 23) 1 x PRIMARY AIR SLIDER (AFS1426)
- 24) 1 x GLASS CLIPS (AFS1010)
- 25) 1 x GASKET AND GLASS CLIPS (AFS1361)



VILLAGER ESPRIT 10 FLEXIFUEL SOLO - SERIES 2 (ESPRIT10FSOLO-S2) Optional Extras list

- 1 x ADD IN BOILER - 3.4KW (AIBV017)
- 1 x STAND FOR ESPRIT10 SERIES 2 (STANDVSDE10-S2)
- 1 x ADD ON CANOPY LOW ESPRIT 10 (AOCVE10L)
- 1 x ADD ON CANOPY HIGH ESPRIT 10 (AOCVE10H)
- 1 x LOGSTORE FOR ESPRIT10 SERIES 2 (LOGVSDE10-S2)
- 1 x ARADA ASH CARRIER - MEDIUM (ARA017)