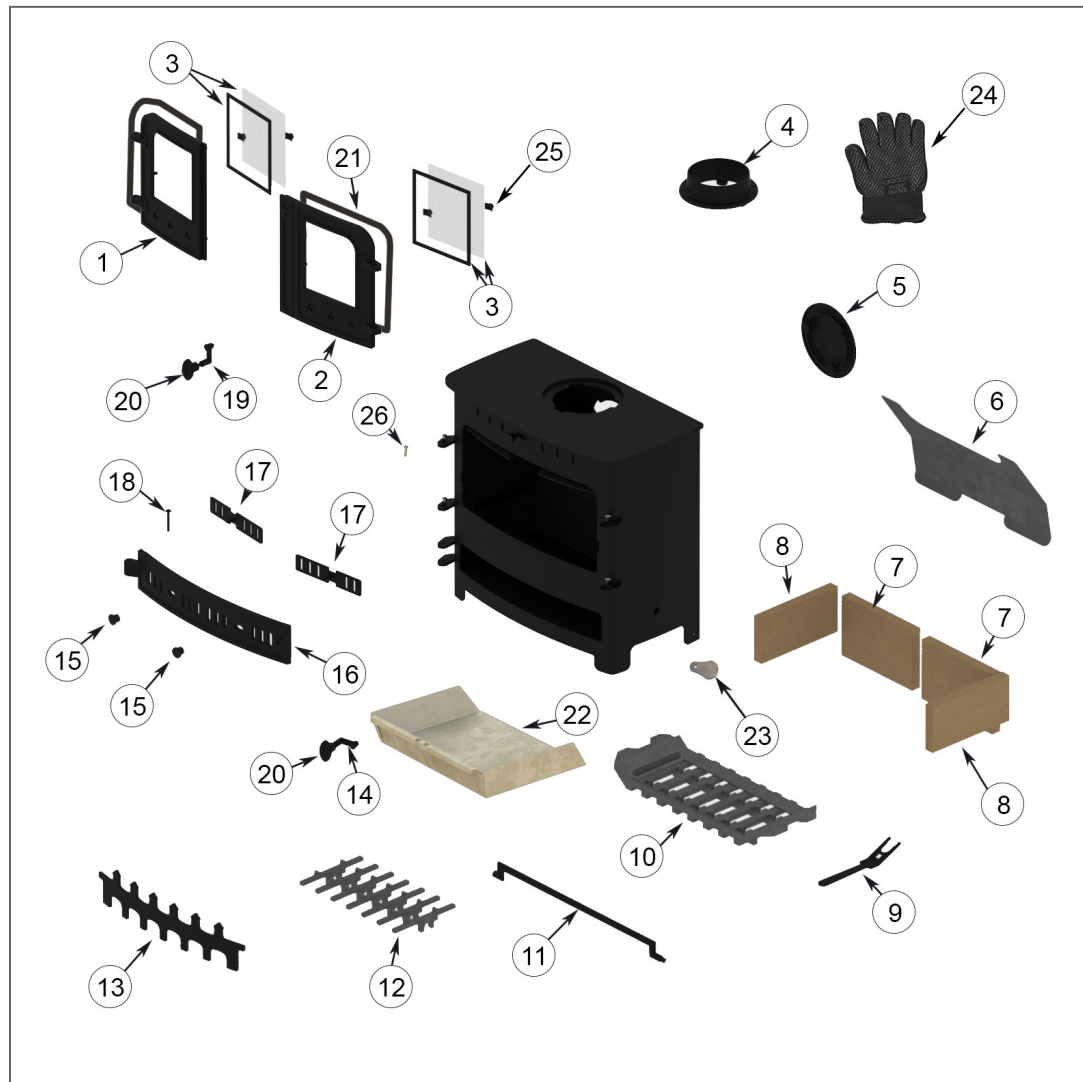


VILLAGER BAYSWATER FLAT MULTI FUEL- S3 (BAYSFM-S3) Parts list

- 1) 1 x FIRE DOOR COMPLETE (LEFT) (VFS034)
- 2) 1 x FIRE DOOR COMPLETE (RIGHT) (VFS035)
- 3) 2 x GLASS AND GASKET (VFS072)
- 4) 1 x 5 INCH FLUE SPIGOT (AFS009)
- 5) 1 x 5 INCH HOT PLATE (AFS010)
- 6) 1 x THROAT PLATE
- 7) 2 x LINER (VFS023)
- 8) 2 x LINER (VFS029)
- 9) 1 x OPERATING TOOL (4MM) (VFS128)
- 10) 1 x GRATE (VFS105)
- 11) 1 x ROCKER ARM (VFS139)
- 12) 7 x RIDDLE BAR (VFS138)
- 13) 1 x LOG RETAINER (VFS121)
- 14) 1 x ASHPIT DOOR LATCH ASSEMBLY (VFS174)
- 15) 2 x AIRWASH KNOB (AFS1405)
- 16) 1 x ASHPIT DOOR (VFS001)
- 17) 2 x ASHPIT DOOR SLIDER
- 18) 1 x ASHPIT HINGE PIN 2 INCH (VFS110)
- 19) 1 x FIRE DOOR LATCH ASSEMBLY (VFS171)
- 20) 2 x HANDLE (VFS045)
- 21) 1 x ARADA ROPE KIT 1 (ARA013)
- 22) 1 x ASH PAN (AP502)
- 23) 2 x SELF LEVELLING FEET (AFS2705)
- 24) 1 x ARADA HOT GLOVE (ARA010)
- 25) 1 x GLASS CLIP COMPLETE WITH NUT (PACK OF 4) (VFS206)
- 26) 4 x HINGE PIN 1 INCH (VFS112)



VILLAGER BAYSWATER FLAT MULTI FUEL- S3 (BAYSFM-S3) Optional Extras list

- 1 x ARADA STOVE STAND 2 (STAND002)
- 1 x ARADA ASH CARRIER - MEDIUM (ARA017)
- 1 x ADD ON CANOPY LOW FOR FMATEW-S3 & BAYS-S3 (AOCV020)
- 1 x ADD ON CANOPY HIGH FOR FMATEW-S3 & BAYS-S3 (AOCV021)
- 1 x ADD IN BOILER - 4.6KW (AIBV009)
- 1 x GRATE CONVERSION PLATE FOR BAYSWATER ELITE (VFS102)
- 1 x FLOOR FIXING KIT (AFS1135)
- 1 x UNIVERSAL STAND/LOG STORE (STAND004)