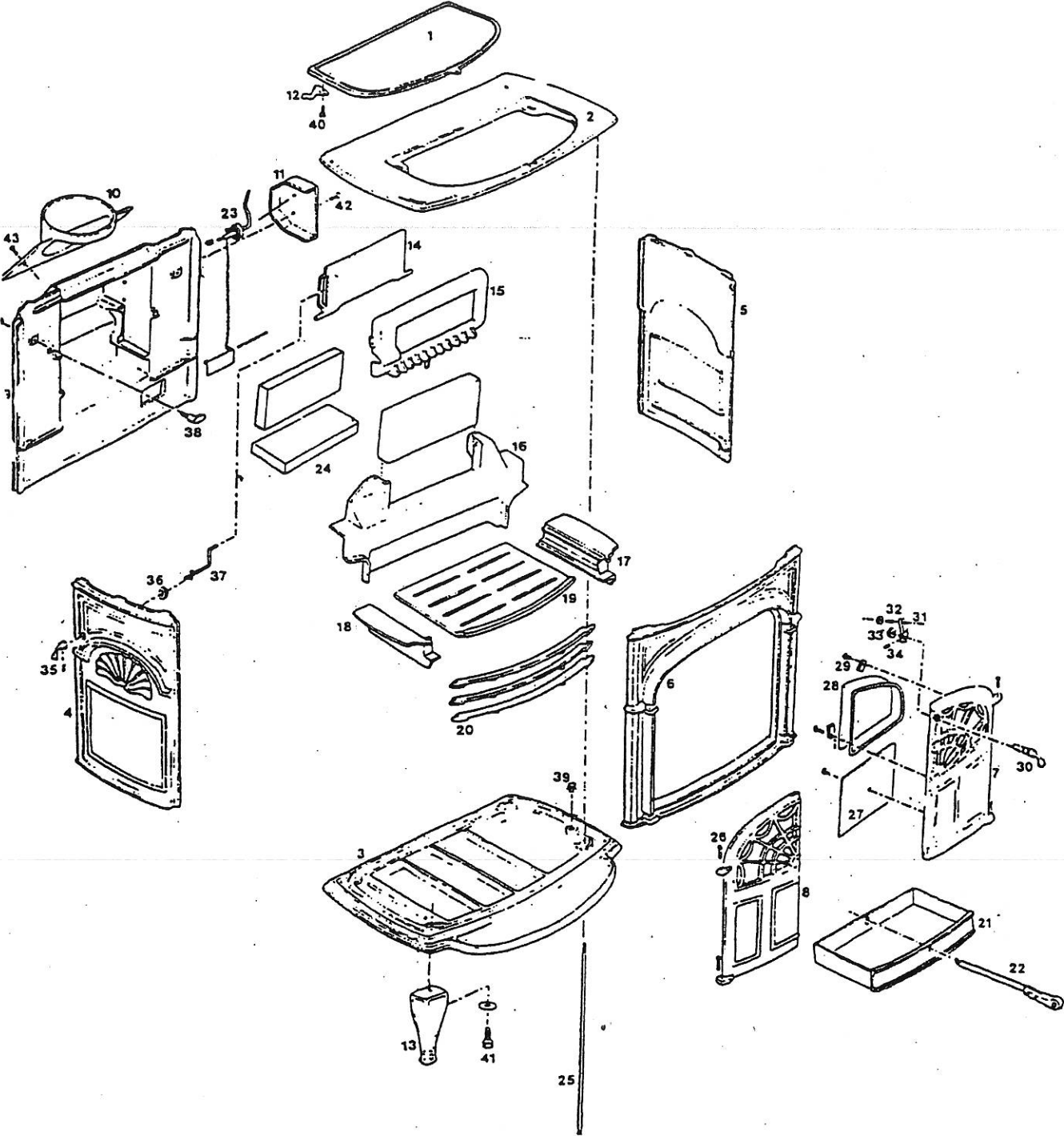


INTREPID I MODEL 1302





Intrepid

MODEL # 1302 INTREPID I

*FEATURES: MANUFACTURED FROM 7/29/82 THROUGH 6/9/88
HAS NO CATALYST*

DIAGRAM #	ITEM #	PART DESCRIPTION
1	1306356	GRIDDLE (NO QUADS)
2	NA-1306760	TOP
	SUBSTITUTE: 1308657	
3	NA-1306700	BOTTOM
	SUBSTITUTE: 1306764	
4	NA-1306428	LEFT END
5	NA-1306324	RIGHT END
6	5004608	FRONT WITH DOORS- SINGLE GLASS
7	1306765	RIGHT DOOR- SINGLE GLASS
8	1306766	LEFT DOOR -SINGLE GLASS
9	NA-1306416	BACK
10	1306561 <i>A</i>	FLUE COLLAR
11	NA-1306399	THERMOSTAT COVER
12	<i>1300809A</i> 000444	QUADRANT
13	1306333	LEG (1 ONLY)
	5003457	LEGS (SET OF 4)
14	1306367	DAMPER
15	1306381	UPPER FIREBACK
16	1306451	LOWER FIREBACK
17	1306485	RIGHT AIRTUBE
18	1306479	LEFT AIRTUBE
19	NA-1306473	BOTTOM GRATE
	SUBSTITUTE: 1306712 & 1306717	
	1306712	BOTTOM GRATE (CAN BE SUBSTITUTED FOR BAR GRATE TAKES ANDIRONS)
	1306717	ANDIRON (USED WITH GRATE 130-6712)
20	1306437 <i>A</i>	FRONT GRATE BAR (CAN SUBSTITUTE ANDIRONS IF YOU USE GRATE 130-6712)
21	5003522	ASH PAN

22	5005708	SLICER/ POKER
23	0004327	THERMOSTAT ASSEMBLY
	1201985	JUMP RING
	1201972	BALL CHAIN FITTING
	1201960	BALL CHAIN (PER FT)
	1201846	TENSION SPRING
	0005801	THERM FLAP
	1601555	THERM FLAP PIN
24	1601103	FIREBRICK SPLIT (1)
25	5007499	TIE RODS (SET OF 4 & TIE ROD NUTS)
26	1600535	DOOR PIN
	1202420	FELT DOOR PIN WASHER
27	1601495	SS AIR GUIDE
	1200980	AIR GUIDE & GLASS CLIP SCREW (10 24 X 1/4 PHIL PAN HDL)
28	1401152	GLASS (1 ONLY)
29	1601394	GLASS CLIPS (2 NEEDED)
30	0004370	FRONT HANDLE STUB WITH SET SCREW - 5004237
31	0004384	PAWL ASSEMBLY 5004024
32	1200436	STRIKER BOLT
33	1203290	LARGE PAWL NUT
34	1200417	SET SCREW
35	0004355	DAMPER HANDLE STUB
	1200563	DAMPER HANDLE SET SCREW
36	1202479	DAMPER WASHER
37	1600852	DAMPER ROD
38	1201583	FIREBACK TAB (WELD SCREW)
	1203126	FIREBACK TAB ACORN NUT
39	1200651	HOLE PLUG
40	1201338	1/4-20 X 1/2 HEX CS
41	1201432	LEG BOLT (1 ONLY)
	0005807	LEG BOLT PACKAGE (SET OF 4)
42	1202488	THERM COVER SCREW
43	1200900	1/4-20 X 5/8 PH RD HD

ITEMS NOT SHOWN

1600600	HANDLE HOLDER
0004342	CERAMIC HANDLE COMPLETE
1201294	CERAMIC HANDLE- SCREW ONLY
1600620	CERAMIC HANDLE (CERAMIC PART ONLY)
1600650	THREADED CERAMIC HANDLE LIFTER ONLY
1201899	PLUG FOR BOTTOM (1)
1200998	HEAT SHIELD SCREW (PH TRUSS SCREW) (5/16 PL 10 - 24 X1/2)
	MANUAL



ENAMEL PARTS

***PREFIX FOR ENAMEL PARTS**

- | | | |
|---------------------|----------------------------|--------------------------|
| 131 RED | | 136 GRAY |
| 132 SAND | 137 CHOCOLATE BROWN | |
| 133 BLUE | | 138 ANTIQUE GREEN |
| 134 MIDNIGHT | | 139 ANTIQUE BROWN |

SUBSTITUTE:

- | | |
|--------|--|
| * 6416 | BACK (NOT AVAILABLE IN SAND, BLUE, & MIDNIGHT) |
| * 6700 | BOTTOM (N/A IN SAND, BLUE, MIDNIGHT OR GRAY - CURRENT COLORS ONLY) |
| * 6764 | (FOR CURRENT COLORS ONLY) |
| * 6561 | FLUE COLLAR (NOT AVAILABLE IN ANTIQUE BROWN - CURRENT COLORS ONLY) |
| * 6444 | FRONT (N/A IN GRAY, ANTIQUE GREEN, OR ANTIQUE BROWN - CURRENT COLORS ONLY) |
| * 6428 | LEFT END (NOT AVAILABLE IN RED, SAND, OR BLUE - CURRENT COLORS ONLY) |
| * 6333 | LEG (1) (NOT AVAILABLE IN RED - CURRENT COLORS ONLY) |
| * 6324 | RIGHT END (NOT AVAILABLE IN RED) |
| * 6399 | THERMOSTAT COVER (NOT AVAILABLE IN MIDNIGHT OR ANTIQUE BROWN) |
| * 6760 | TOP (NOT AVAILABLE IN SAND, BLUE OR ANTIQUE BROWN) |

FRONTS WITH DOORS

- | | |
|---------|---------------------------------|
| NA | FRONT WITH DOORS RED |
| 5006091 | FRONT WITH DOORS SAND |
| 5006096 | FRONT WITH DOORS BLUE |
| 5006104 | FRONT WITH DOORS MIDNIGHT |
| 5006136 | FRONT WITH DOORS BROWN |

GASKETS

BELOW IS A LIST OF THE TYPE OF GASKET AND THE LENGTH NEEDED ON THE INTREPID

LOCATION	GASKET SIZE	QUANTITY PART	
		NEEDED	NUMBER
LEFT DOOR	5/16" FIBERGLASS/ NDLE MED DENS	2.8'	1203588
LFT DR GLASS	3/16" FIBERGLASS	1.75'	1203556
RIGHT DOOR	5/16" FIBERGLASS/ NDLE MED DENS	2.2'	1203588
RT DR GLASS	3/16" FIBERGLASS	1.75'	1203556
GRIDDLE	5/16" ARMASEAL	3.6'	1203668
FLUE COLLAR	1/4" FIBERGLASS	2.5'	1203560