

# Trianco

## SOLID FUEL

### TRG RANGE MKII GRAVITY FEED FORCED DRAUGHT BOILERS

### USER INSTRUCTIONS

The following information and instructions are provided to enable you to obtain the best possible results from your boiler with the minimum of attention.

#### Introduction

Trianco Redfyre "TRG" forced draught gravity feed boilers have been approved for burning smokeless solid fuels and are in the list of Approved Domestic Solid Fuel Appliances issued by the Heating Equipment Technical Approval Scheme Limited (HETAS Ltd). They are designed to burn anthracite in accordance with the requirements of the Clean Air Act 1956 and can be installed in the kitchen or utility room to provide full central heating and domestic hot water for the whole house.

The boiler output is automatically controlled by a water sensing thermostat which switches the forced draught fan on to boost the fire when there is a demand for heat. On reaching the desired temperature, the fan is switched off and the fire then slumbers at a low burning rate under controlled natural draught until there is a further demand for heat.

The fuel feeds by gravity from the hopper to the firebed where it is burnt at a constant firebed depth with the residual ash being formed into a solid clinker for easy removal by the inbuilt declinking ram.

Routine flue cleaning of the boiler is easily carried out by the user through the draught-stabiliser opening which allows the purpose designed scraper to be passed through the flueways. A complete maintenance service should be carried out annually by a qualified service engineer.

The boiler can be connected to any normal type of heating and indirect hot water system but being a continuous burning appliance it is essential that a radiator or towel rail is connected in the gravity circuit to dissipate any residual heat when the heating pump is off.

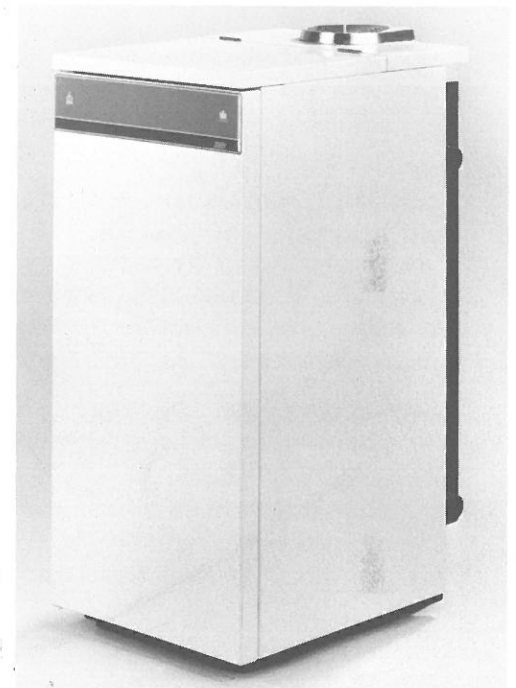
#### Fuel

These boilers are designed to burn anthracite Grains and Beans as made available by British Coal. When ordering fuel from your supplier, specify for use with a Trianco Redfyre TRG boiler.

Wet fuel and oversize pieces could prevent gravity feeding so to avoid the inconvenience of the fire going out the excess moisture should be allowed to drain and oversize pieces be removed.

#### Fuel Feed Regulation

Fuel-regulator is located at the back of the hopper to control the depth of firebed. Adjustment is provided by means of holes which engage over a hanger peg to suit the fuel being burned. The following settings must be used:



#### Fuel Regulator Settings

Top hole	Anthracite Grains
2nd hole from top	Anthracite Beans

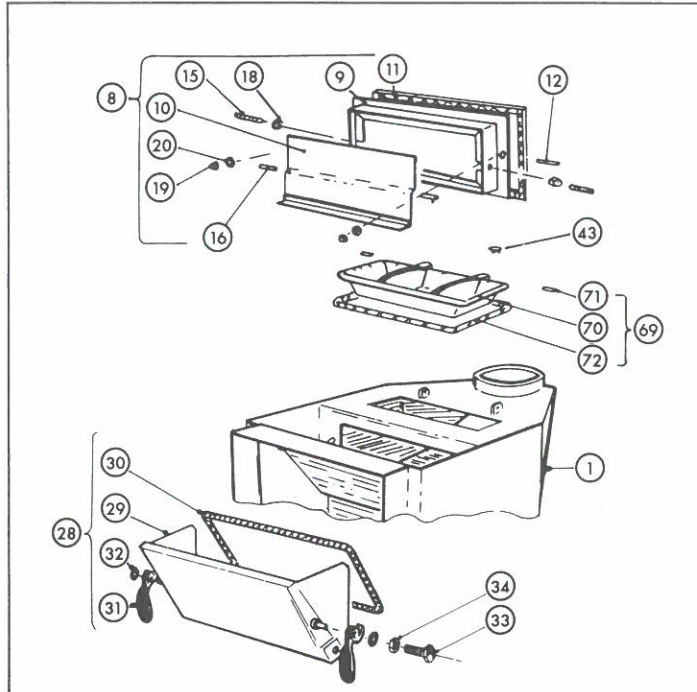
**Note:** Do not allow fuel level in hopper to fall below fuel-regulator plate.

#### Declinking

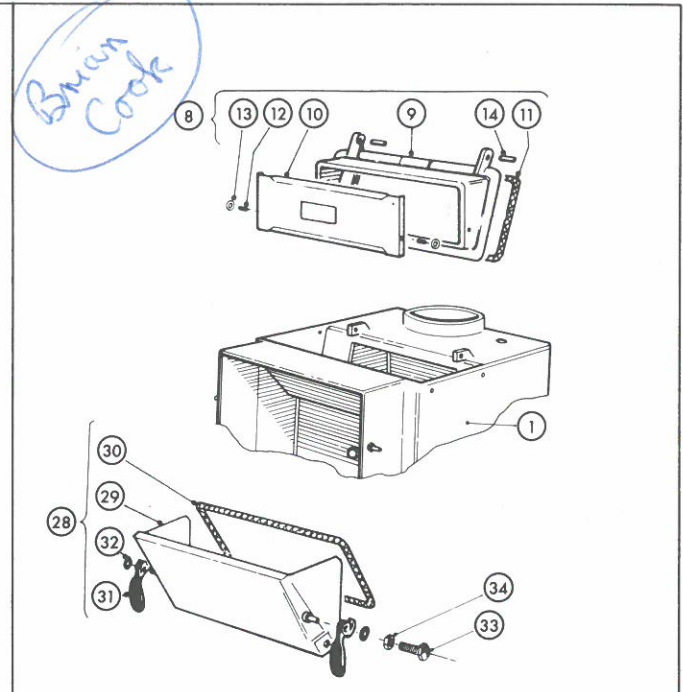
Under average winter conditions it is usually necessary to declinker once a day, preferably in the morning at the start of the heating load. Do not declinker last thing at night as this could cause a blow-back (delayed ignition of flue gases) if the fire is not fully recovered to a bright condition.

During the early and latter parts of the heating season declinking every other day is usually sufficient whereas when used for supplying just domestic hot water the boiler may only need attention every 3 days.

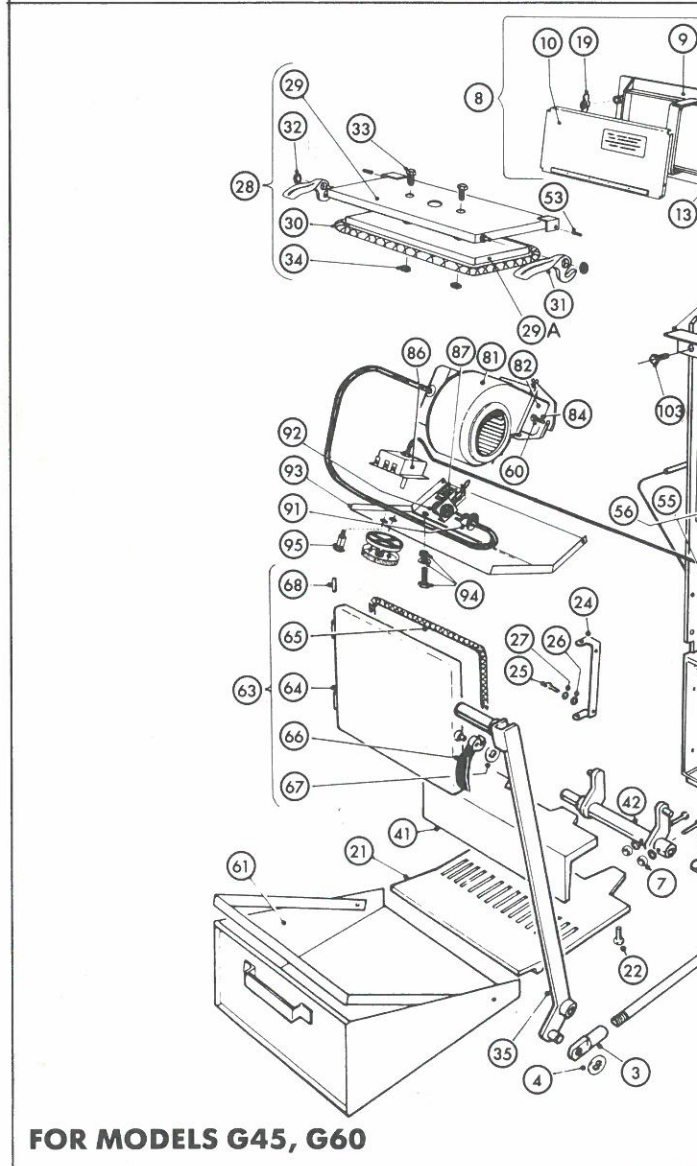
**BOILER BODY ASSEMBLY**



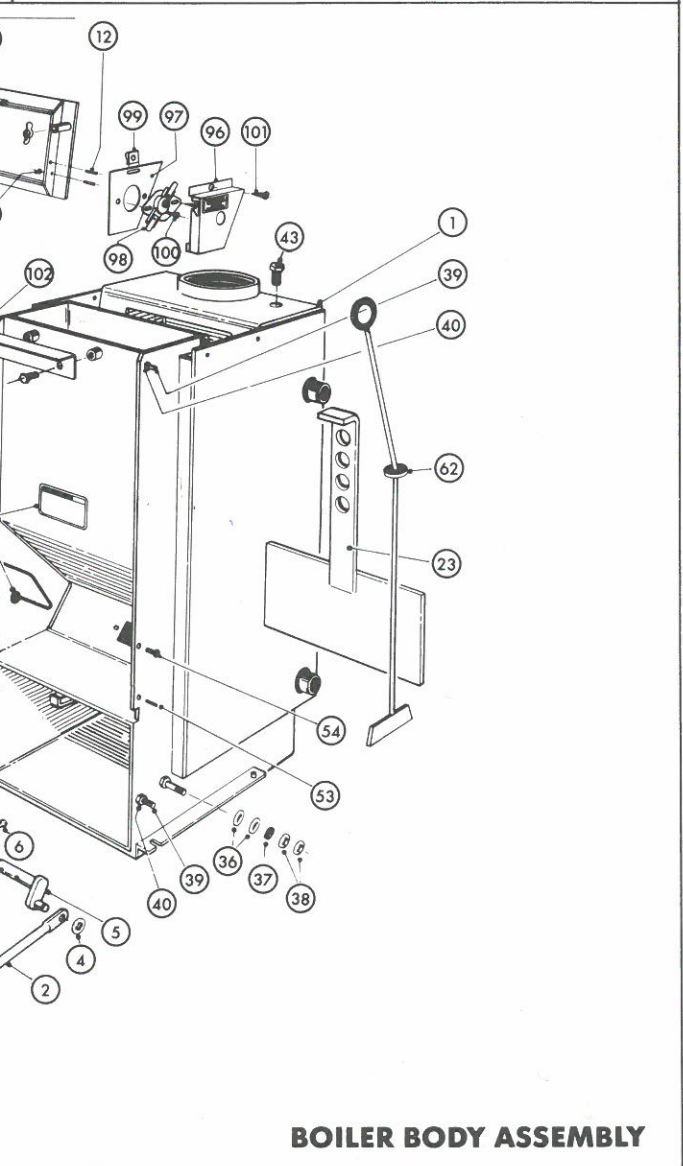
**FOR MODELS G125, G150**



**FOR MODELS G80, G100**



**FOR MODELS G45, G60**



**BOILER BODY ASSEMBLY**

**BOILER BODY ASSEMBLY**

ITEM No.	DESCRIPTION	TRG 45	TRG 60	TRG 80	TRG 100	TRG 125	TRG 150	No. OFF
1	BODY	36510	36610	37510	37810	38030	38270	1
8	DRAUGHT/STAB ASSEMBLY	36551	36651	37680	37680	38130	38130	1
11	SEAL	—	—	98164	98164	98164	98164	1
21	FIRE PLATE	37061	37275	37630	37883	38075	38305	1
23	FUEL REGULATOR	37056	37272	37590	37860	38060	38290	1
28	HOPPER-CHUTE/LID ASSEMBLY	36571	36671	37570	37850	38050	38280	1
30	SEAL	98178	98178	98178	98178	98178	98178	1
61	CLINKER TRAY ASSEMBLY	36505	36705	37720	37900	38150	38320	1
62	FLUE SCRAPER	38500	38500	38500	38500	38510	38510	1
65	SEAL	98178	98178	98178	98178	98178	98178	1
69	FLUE COVER ASSEMBLY	—	—	—	—	38450	38450	1
72	SEAL	—	—	—	—	98178	98178	1
81	FAN UNIT	37134	37134	35534	35534	38411	38411	1
86	THERMOSTAT SOPAC+KNOB +BEZEL	37170	37170	37170	37170	37170	37170	1
93	THERMOSTAT CONTROL COVER ASSEMBLY	36566	36641	36145	36205	36265	36325	1
98	BLOCKED FLUE STAT	45651	45651	—	—	—	—	1

**CASING ASSEMBLY**

ITEM No.	DESCRIPTION	TRG 45	TRG 60	TRG 80	TRG 100	TRG 125	TRG 150	No. OFF
1	DOOR ASSEMBLY	36591	36691	37743	36746	36751	36754	1
12	SIDE ASSEMBLY L/H	36595	36595	37750	37750	38350	38350	1
13	SIDE ASSEMBLY R/H	36596	36596	37760	37760	38360	38360	1
14	SIDE FIXING ANGLE ASSEMBLY	36561	36561	37160	37160	37160	37160	2
20	DOOR STRIKE 263 E1561-01	95192	95192	95192	95192	95192	95192	1
21	TOP ASSEMBLY	—	—	37770	37930	38180	38370	1
22	FLUE BEZEL ASSEMBLY	37128	37128	37780	37944	—	—	1
23	LATCH, SPIRE SCO2130	95190	95190	95190	95190	95190	95190	4
	FRONT & REAR PANEL ASSEMBLY	36581	36681	—	—	—	—	1
24	REAR PANEL	36582	36682	—	—	—	—	1
25	FRONT PANEL	36586	36686	—	—	—	—	1
26	L/H HINGE BRACKET ASSEMBLY	36584	36584	—	—	—	—	1
27	R/H HINGE BRACKET ASSEMBLY	36585	36585	—	—	—	—	1
11	LATCH, FASTEX ITW	95163	95163	95163	95163	95163	95163	1
16	STUD SPIRE No.5 BV2141/17	95191	95191	95191	95191	95191	95191	4
17	WASHER, SHAKEPROOF 4BA	92211	92211	92211	92211	92211	92211	4
18	SCREW ROUND HEAD 4BA x 3/16"	91171	91171	91171	91171	91171	91171	4

