



ACR

STOVES

Birchdale

Multifuel Cast Iron Stove • Model FB4MF

To be retained by the user for future reference

Thank you for purchasing an ACR Heat Products stove



MULTI FUEL



SMOKE EXEMPT



AIRWASH SYSTEM



10 YEAR WARRANTY



Serial Number:

Document FB4MF 0101 • Version 1 Date 06/07/15

T E C H N I C A L M A N U A L



Parts Information

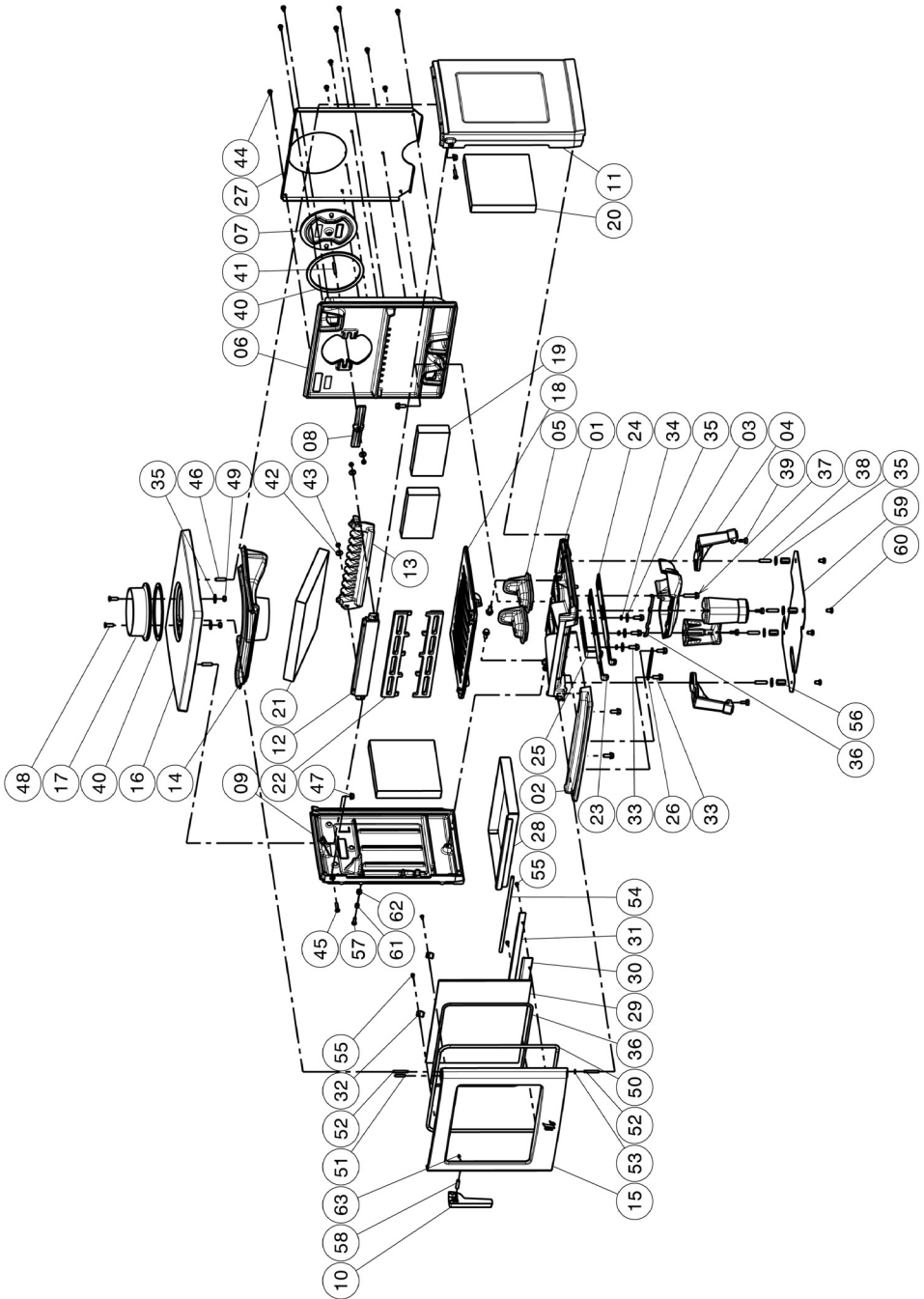


Diagram No.	Part No.	Description
1	03.09244.005	BOTTOM PLATE
2	03.05638.005	ASH LIP
3	03.00395.002	FLUE COLLAR
4	03.52282.005	LEG
5	03.37696.002	AIR TUNNEL
6	03.02476.005	BACK PLATE
7	03.15381.021	COVER ROUND 168MM
8	03.07216.002	LOCKING PLATE
9	03.79346.005	SIDE LEFT
10	03.27419.005	HANDLE
11	03.79347.005	SIDE RIGHT
12	03.24473.005	FRONT
13	03.37105.002	AIR DEFLECTOR
14	03.37693.002	AIR TUNNEL
15	03.15510.005	DOOR
16	03.69242.005	TOP PLATE
17	03.00314.102	FLUE COLLAR Ø125 INSIDE
18	03.66545.002	FIRE GRATE
19	03.77527.000	BACK PLATE
20	03.77526.000	SIDE PLATE
21	03.77543.100	VERMICULITE BAFFLE PLATE
22	03.77430.002	LOG RETAINER
23	03.38036.000	DRAFT CONTROL
24	03.38037.000	DRAFT CONTROL
25	03.38018.100	DRAFT CONTROL
26	03.31452.000	CLAMPING PLATE
27	03.37697.100	AIR TUNNEL
28	03.05241.000	ASH BOX
29	03.26386.000	GLASS
30	03.26163.000	GLASS RETAINER
31	03.29042.000	SUPPORT ROPE
32	03.26101.041	GLASS RETAINER
33	03.22201.041	HEXAGON FLANGE BOLT M8X20 BLACK
34	03.13612.000	BUSH Ø12XØ8X3.5
35	03.18710.000	WASHER 8X25
36	04.26419.000	GLASS FIBER ROPE Ø6MM SELF ADHESIVE
37	03.22204.041	HEXAGON FLANGE BOLT M8X35 BLACK
38	03.19508.000	STUD M8X25
39	03.76320.000	ADJUSTBLE LEG
40	04.26422.000	GLASS FIBER BAND 10X3MM SELF ADHESIVE
41	03.19505.000	STUD M6X35
42	03.18701.000	WASHER 6X18
43	03.19410.000	HEXAGON NUT M6
44	03.19303.041	HEXAGON HEXAGON HEAD SCREW M6X12
45	03.18605.041	SCREW M6X30 BLACK
46	03.19507.000	STUD M8X20
47	03.22203.041	HEXAGON BLIND RIVET NUT M8
48	03.19733.000	SCREW M8X30
49	03.19401.000	HEXAGON NUT M8
50	04.26408.000	GLASS FIBER ROPE Ø8MM
51	03.17806.000	COILED SPRING PIN 6X30
52	03.58610.100	HINGE PIN
55	03.19801.041	SCREW M5X10 BLACK
56	03.16110.000	CONNECTION NUT HEXAGON M8X24
59	03.28157.100	HEAT SHIELD
60	03.19310.000	HEXAGON HEXAGON HEAD SCREW M8X12
61	03.13619.100	BUSH LATCH 10X8.5X6
62	03.13623.041	BUSH Ø13XØ10X7.5

Birchdale Specifications

Nominal heat output	5 kW - Wood	5 kW - Smokeless Fuel
Chimney draft required	12Pa	
Height	550 mm	
Width	430 mm	
Depth	360 mm	
Weight	90 kg	
Air Requirement	N/A ***	
Flue Mass Gas Flow	3.4g/s - Wood	4.7g/s - Smokeless Fuel
CO @ 13% O ²	0.08 vol %	
Mean Flue Gas Temperature	274°C - Wood	273°C - Smokeless Fuel
Efficiency	78.3% - Wood	81.5% - Smokeless Fuel
Log Length	Up To 300 mm	

*** Please note that Building Regulations Document J advises that additional permanent air supply is required for appliances with an output of above 5Kw.

With modern properties additional air may be required as Document J suggests that adequate air would be a benefit.

- If design air permeability $\geq 5.0\text{m}^3/(\text{h}\cdot\text{m}^2)$ then 550mm²/kW of appliance rated output above 5kW
Or
- If design air permeability $\leq 5.0\text{m}^3/(\text{h}\cdot\text{m}^2)$ then 550mm²/kW of appliance rated output
- If in doubt, please consult your registered installer for advice.

NOTE: DO NOT INSTALL IN A ROOM CONTAINING AN EXTRACTOR FAN

